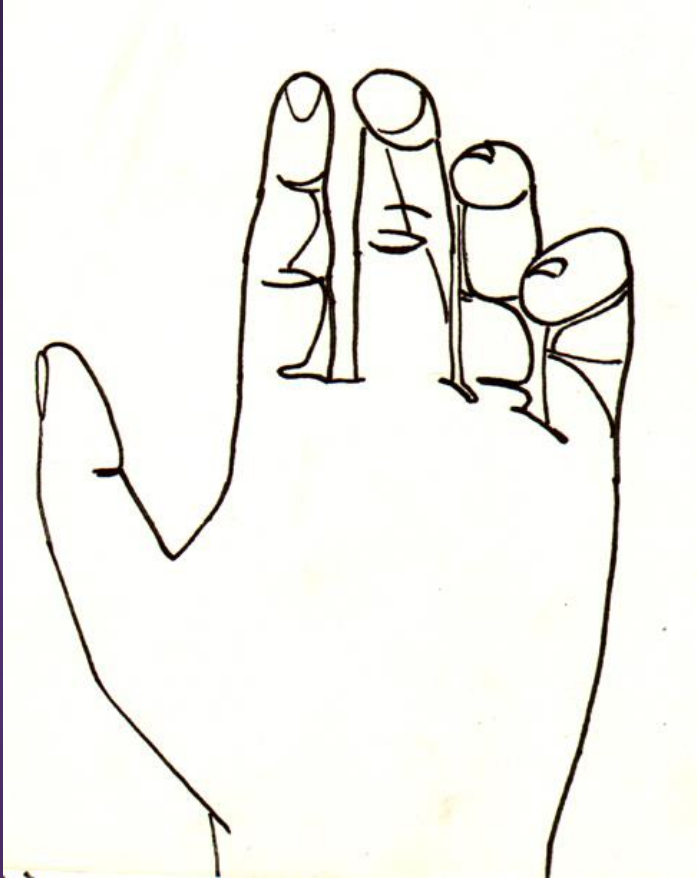


Contour Line Drawing

ART 1, MRS. LEWIS





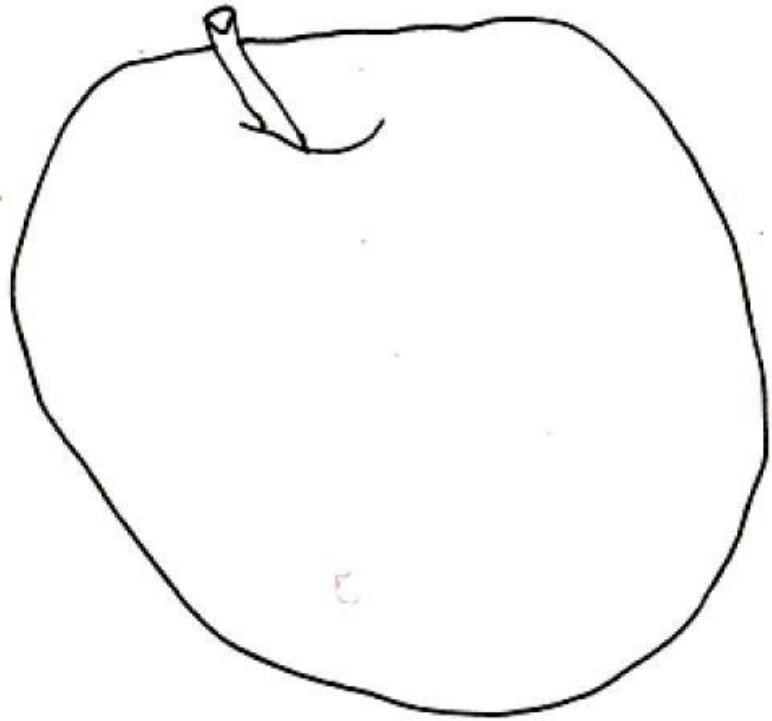
DEFINITION: A CONTOUR IS A LINE THAT DEFINES A FORM OR AN EDGE; A CONTOUR IS AN OUTLINE.

NOTICE THE LACK OF DETAILS IN THIS DRAWING.

Why do we do this in art?

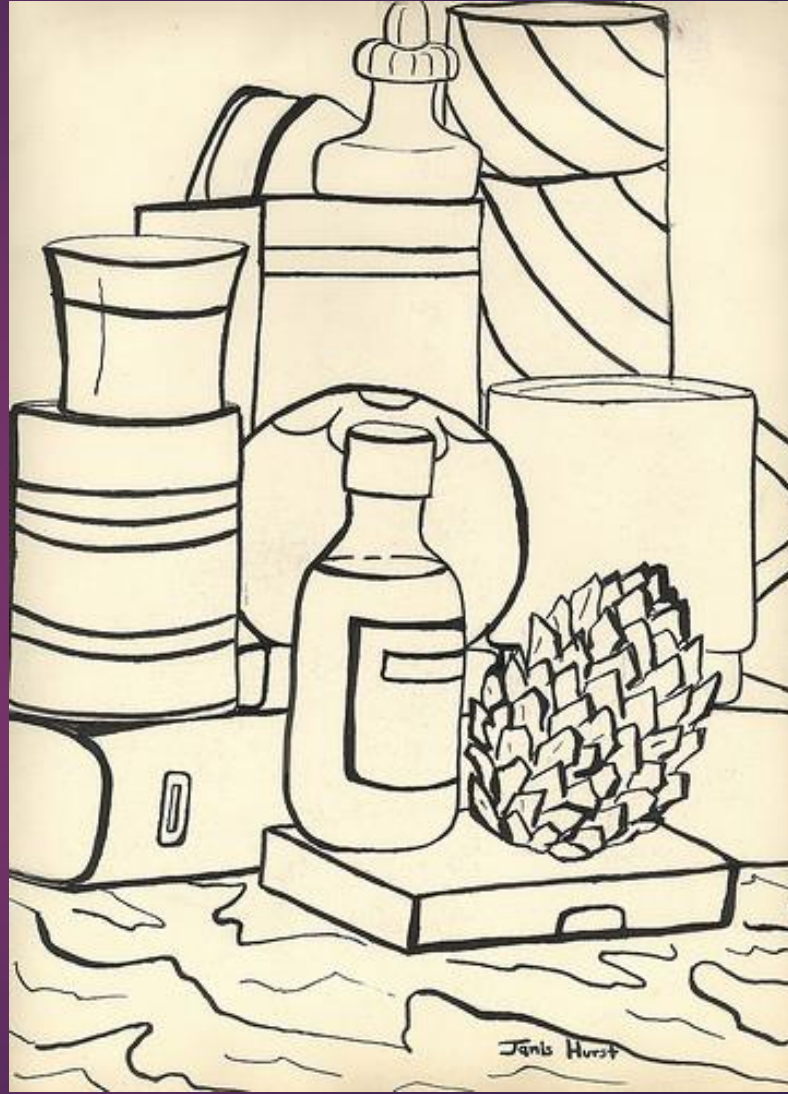
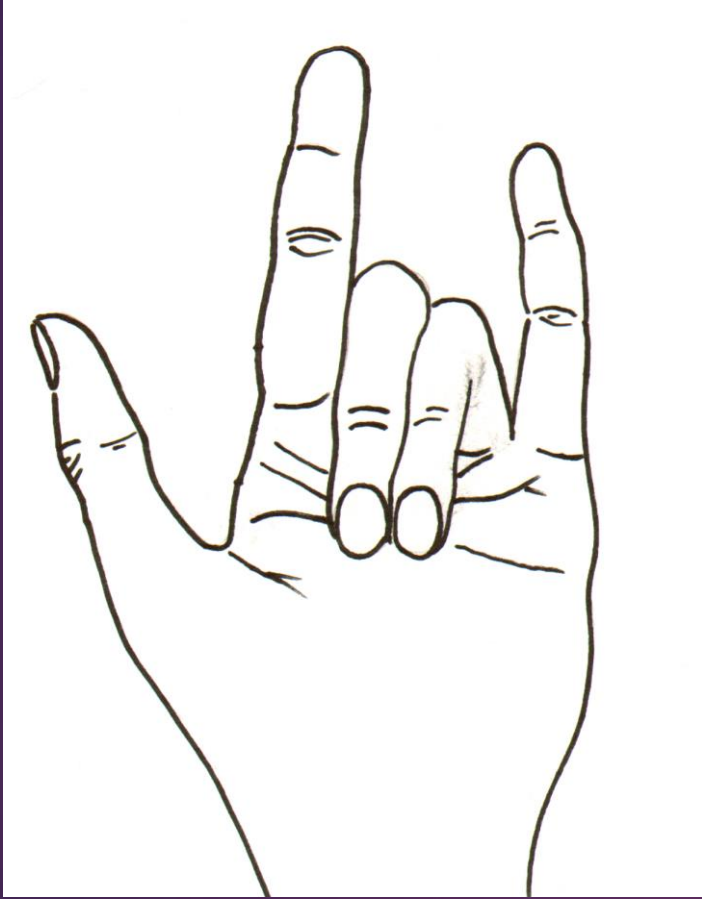
Drawing contour from observation trains your hand and eye to work together... AKA hand-eye coordination.

Contour line drawings are exercises, not finished projects, although they may become starting points for works of art.

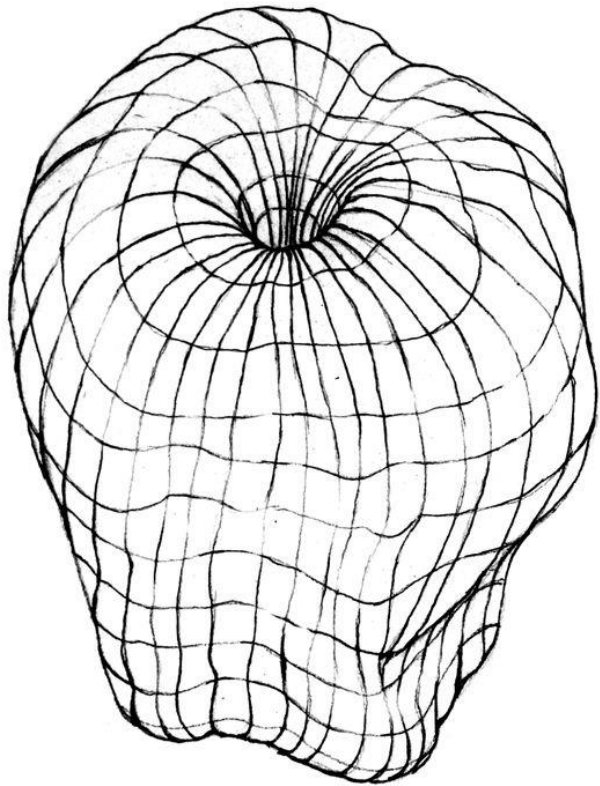


**A PURE CONTOUR DRAWING
ONLY DESCRIBES THE VISIBLE
EDGES OF AN OBJECT, AND
NOTHING ELSE.**

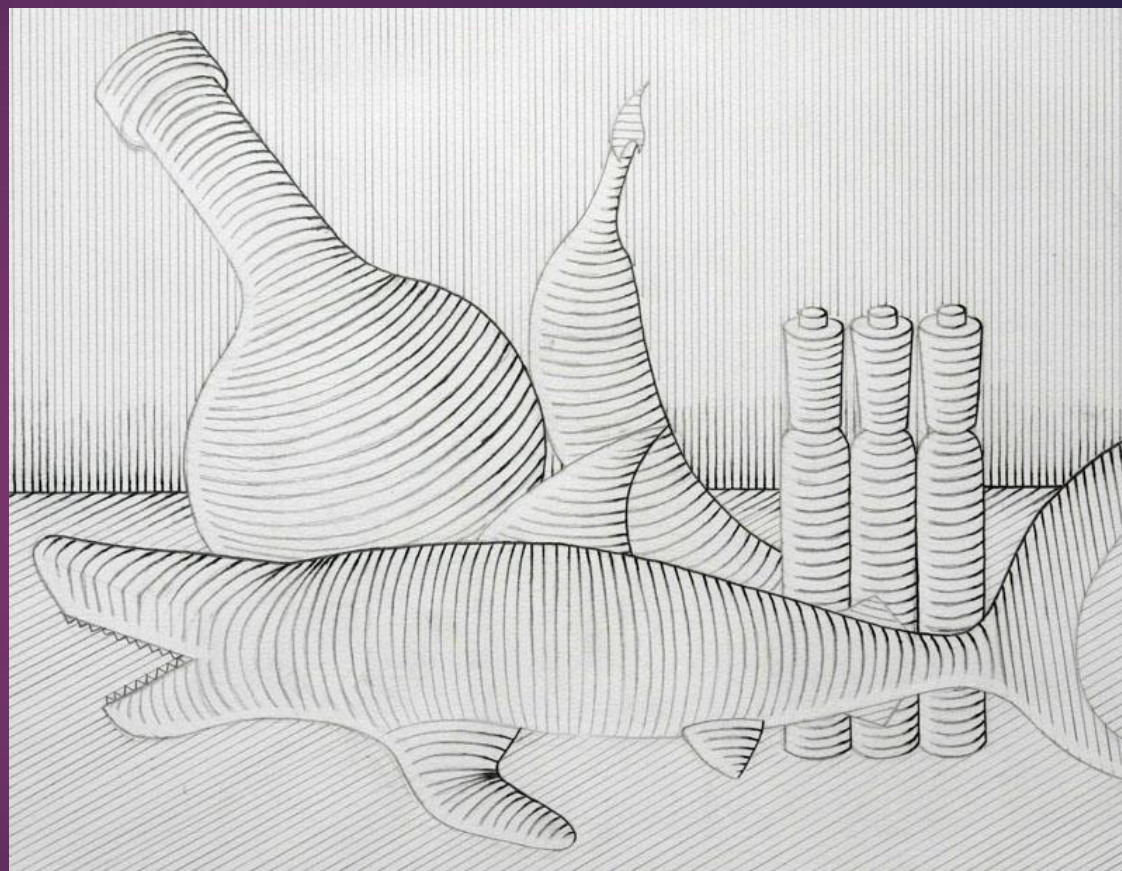
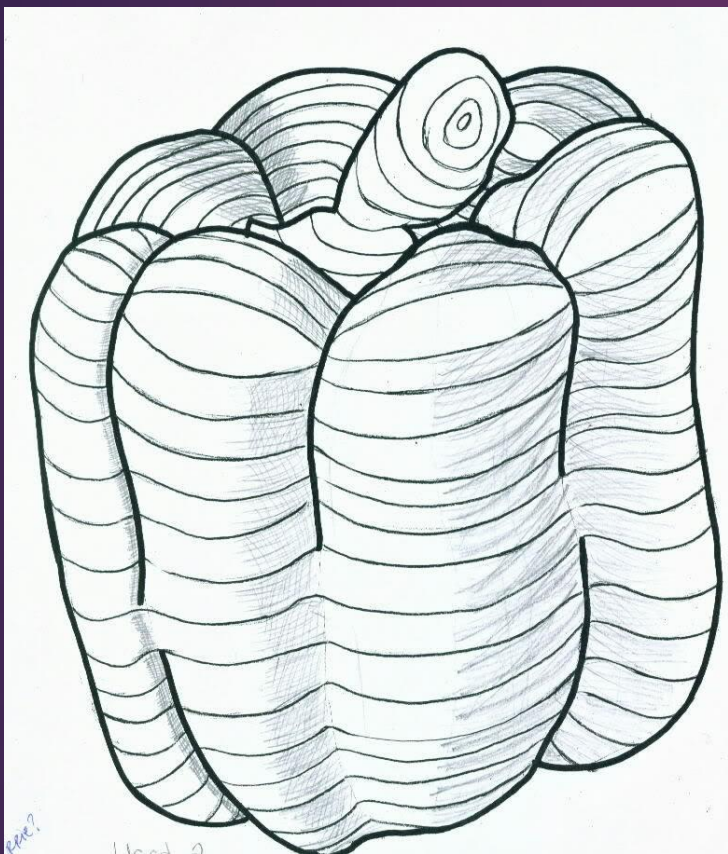


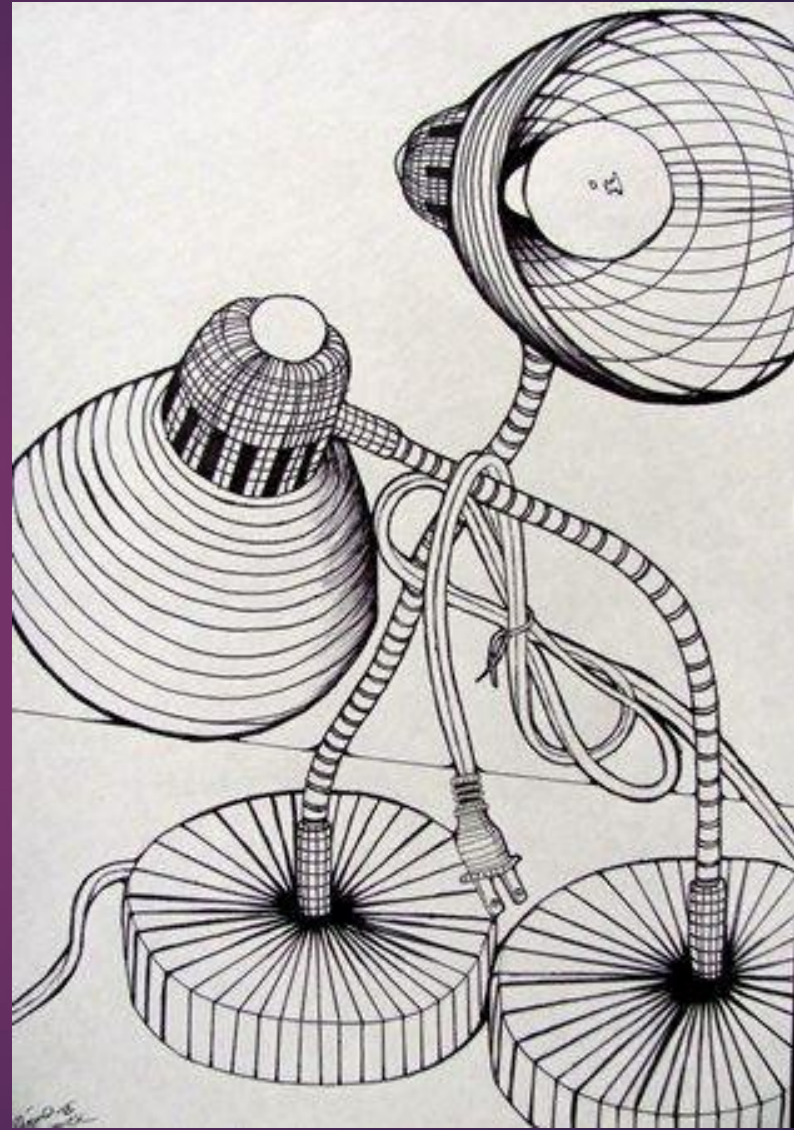
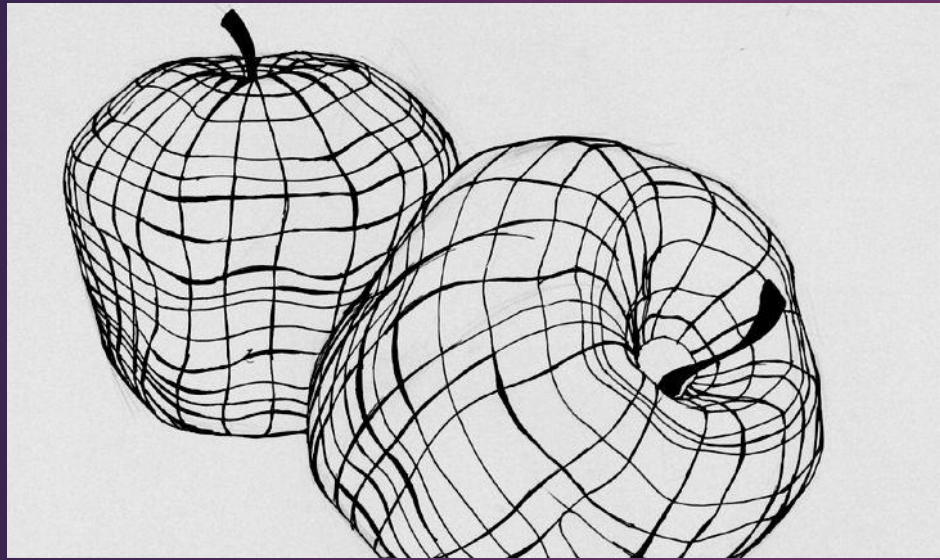




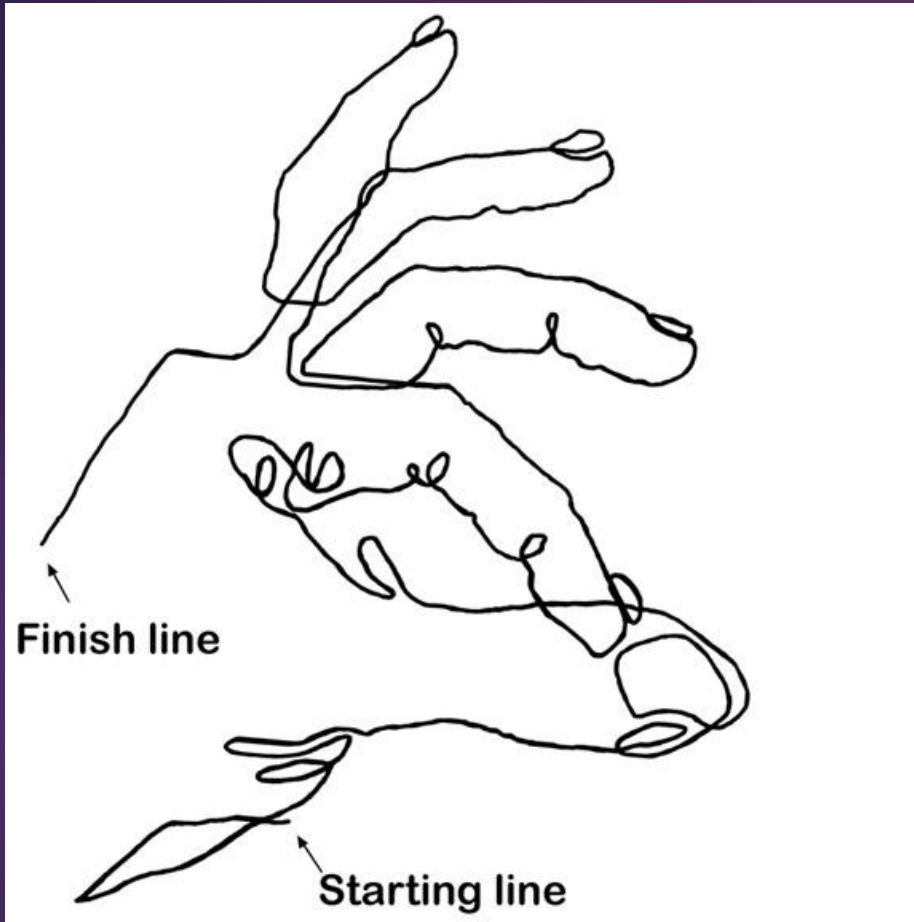


**IN A CROSS CONTOUR, LINES
CROSS OVER THE OBJECT TO
MAKE IT A FORM (3D).**



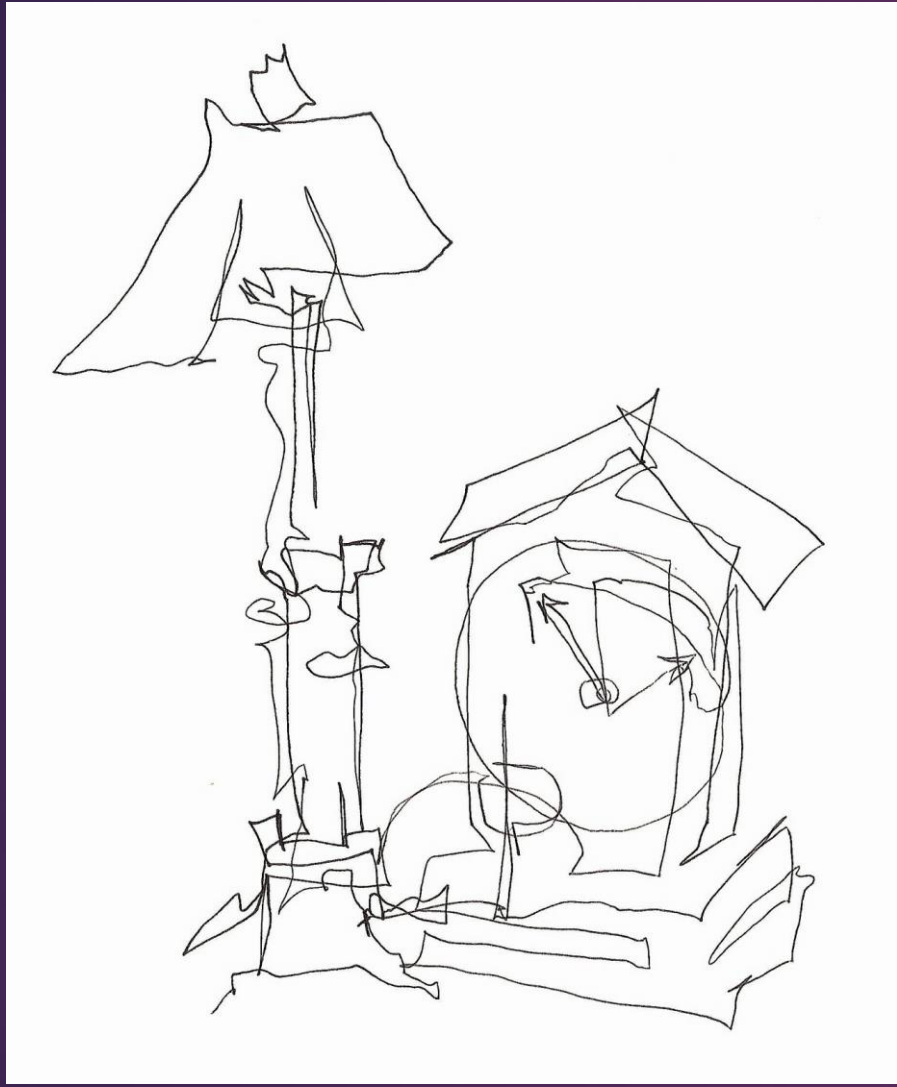


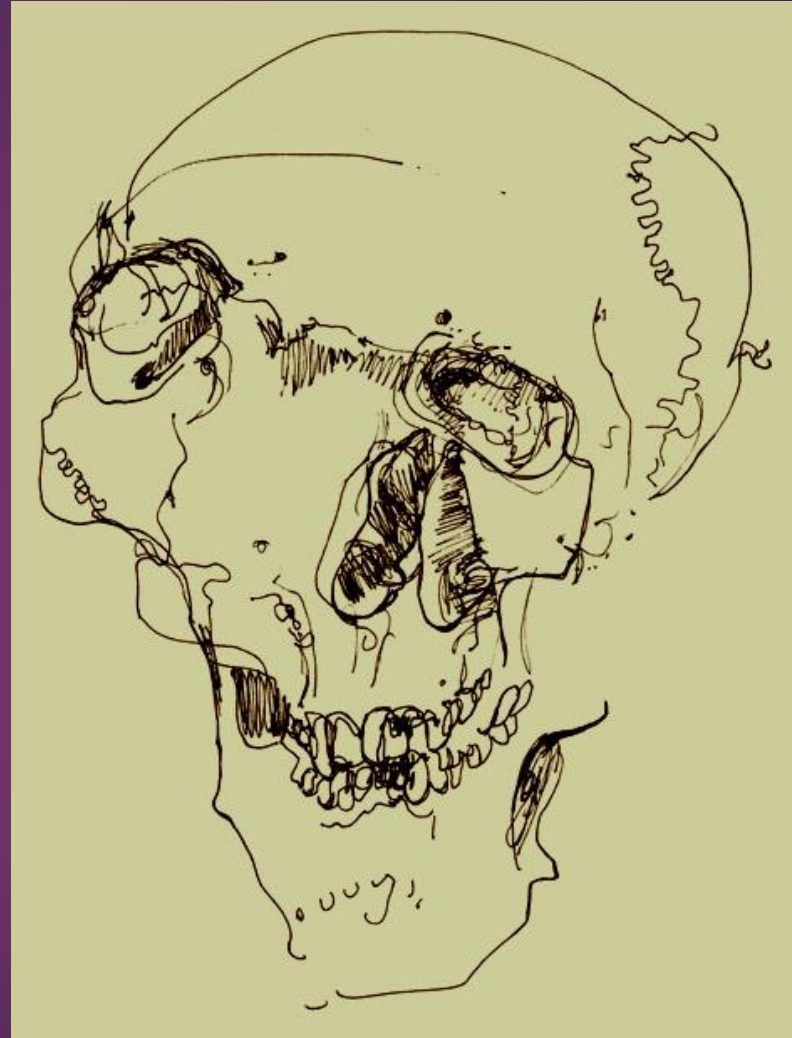


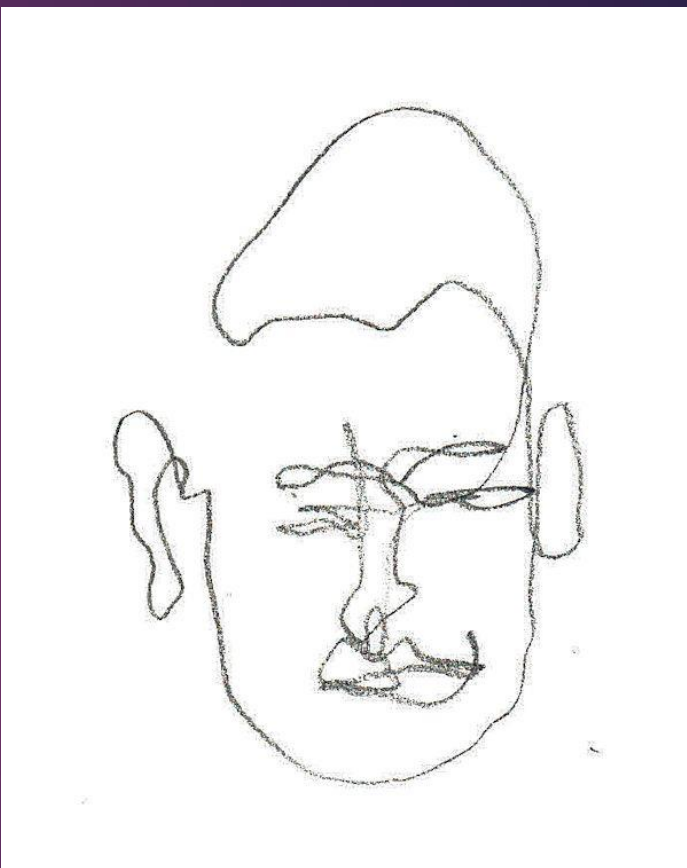


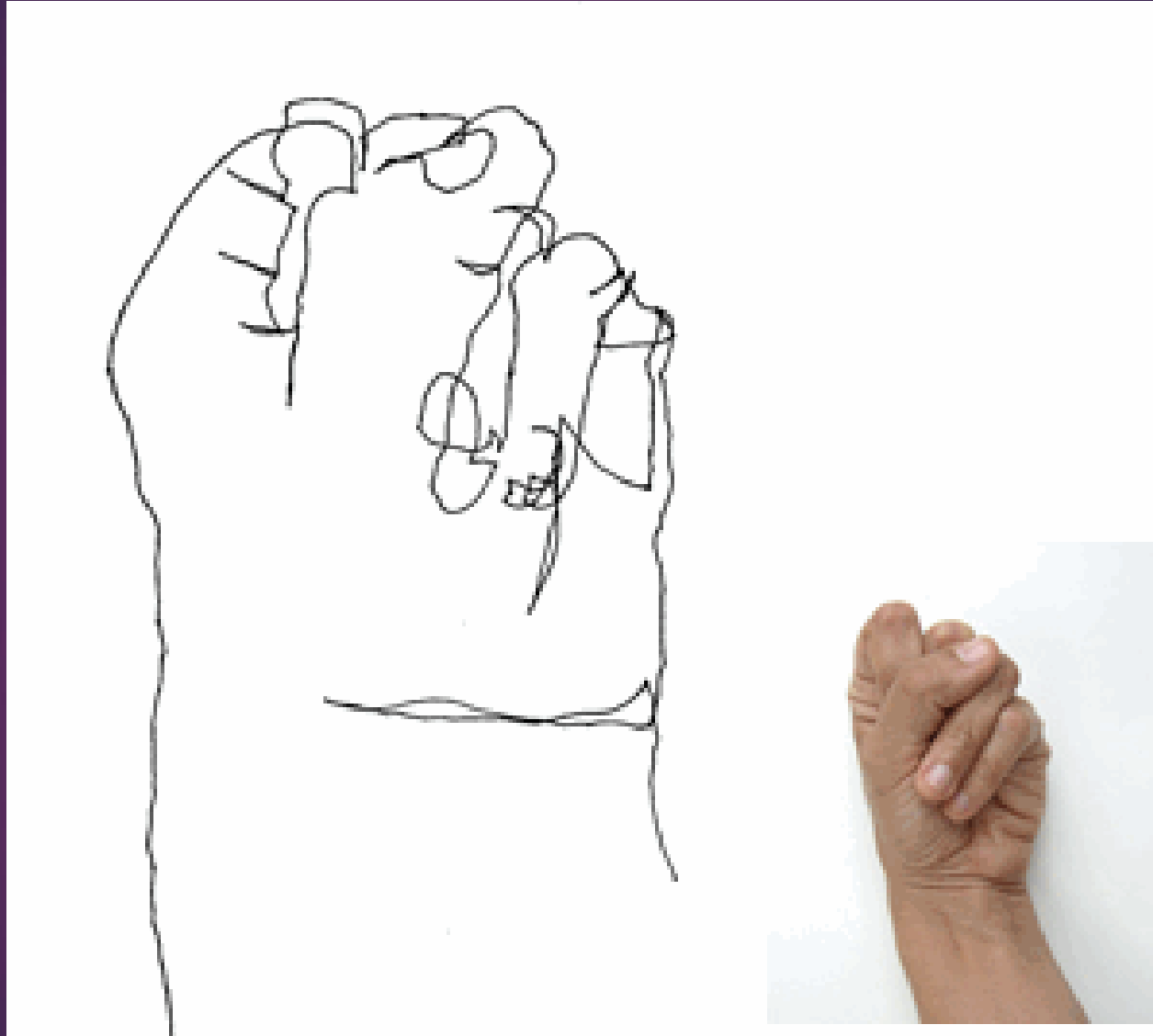
IN A BLIND CONTOUR DRAWING, THE ARTIST DRAWS THE OUTLINE OF THE SUBJECT WITHOUT LOOKING AT THE PAPER OR PICKING UP THEIR PENCIL.

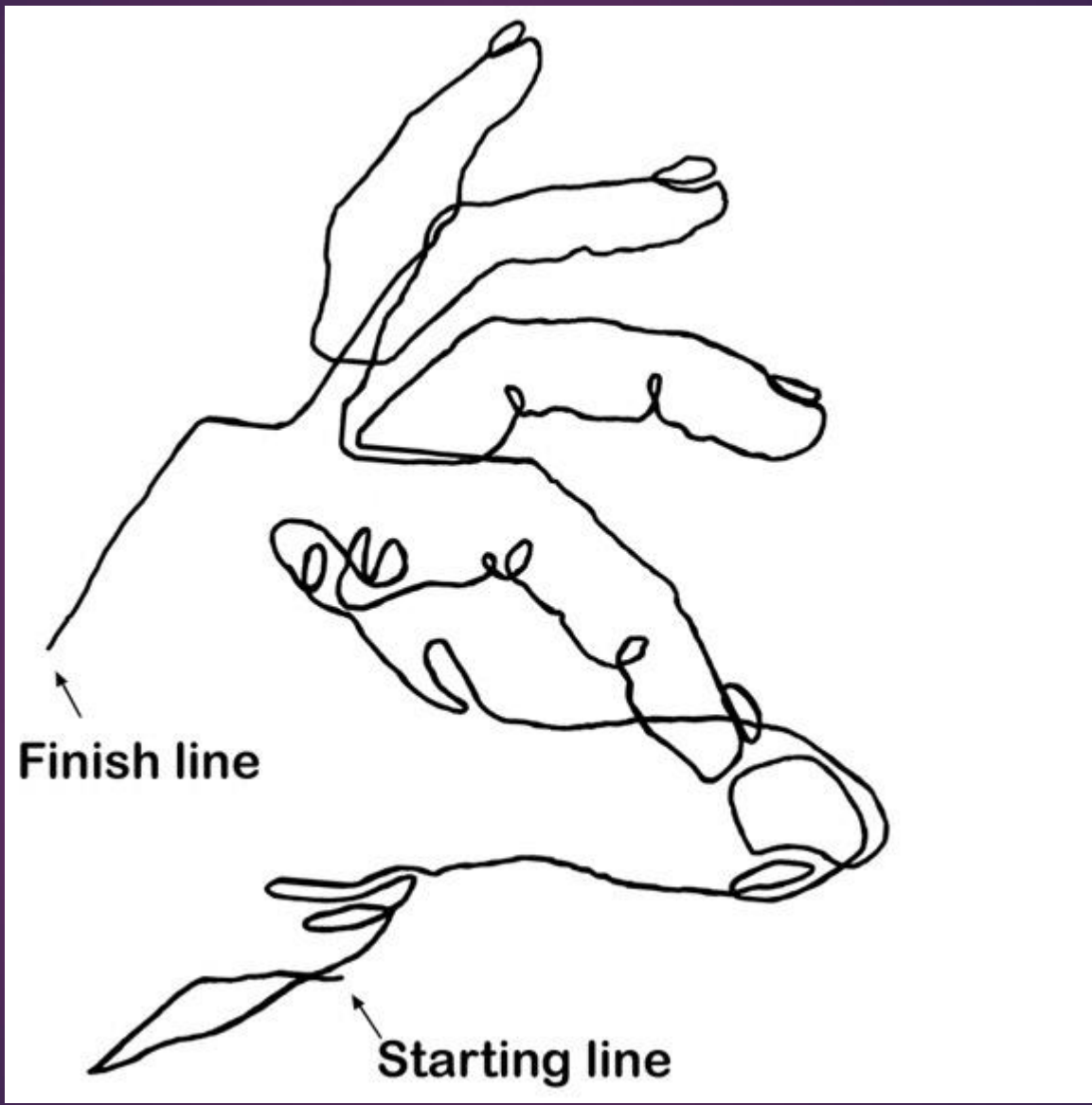
BLIND CONTOUR HELPS DEVELOP HAND-EYE COORDINATION.











Finish line

Starting line